
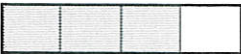




Name \_\_\_\_\_

Score \_\_\_\_\_

<b>1</b> Basic Facts	$5 + 5 =$ $5 + 6 =$ $2 + 8 =$	$13 - 5 =$ $9 - 6 =$ $8 - 2 =$	$7 \times 7 =$ $5 \times 3 =$ $5 \times 9 =$	$8 \times 5 =$ $6 \times 5 =$ $2 \times 0 =$	$20 \div 5 =$ $8 \div 2 =$ $81 \div 9 =$
<b>2</b> Algorithms	$9,999$ $+ 1$	$7,003$ $- 4,225$	$\$4.00$ $\times 7$	$9 \overline{)38}$	$5 \text{ gal}$ $- 1 \text{ gal } 2 \text{ qts}$
<b>3</b> Estimating Rounding	Round to the nearest thousand.				
	$14,370 \approx$ _____ $20,099 \approx$ _____	$9,840 \approx$ _____	$49,263 \approx$ _____ $49,863 \approx$ _____		
<b>4</b> Story Problems	It would cost \$3.00 to have a pair of shoes shined. To save our family money, I shined my best pair, two pairs for my dad, and a pair for my brother. How much did we save?				
					
<b>5</b> Equivalent Fractions		_____ = _____	Multiply numerator and denominator by 2 to get an equivalent fraction. $\frac{1}{4} =$		
<b>6</b> Vocabulary Concepts Facts	Know and Spell add subtract multiply divide division addition	A. To find half of a number, _____ the number by 2. B. When you multiply by 0, the product is always _____. C. How many days in a week? _____ in 4 weeks? _____ D. Multiplication is the opposite, or inverse, of _____. E. How many pounds in a ton? _____			
<b>7</b> Fractional Parts	$\frac{1}{4}$ of 0	$\frac{1}{4}$ of 12	$\frac{1}{4}$ of 8	$\frac{1}{4}$ of 40	$\frac{1}{4}$ of 32
<b>8</b> Place Value Numeration	A. What is one thousand less than 78,000? _____ B. Write seventeen thousand, two hundred forty. _____ C. Complete this. $84,298 =$ _____ + _____ + 200 + _____ + _____ D. Write a number between 47,299 and 47,997. _____ E. Arrange 5, 7, 3, and 9 to make the least number. _____				
<b>9</b> Other Important Topics	 A. This is a _____. It is worth _____ cents. B. What is the value of 2 quarters? _____ 3 quarters? _____ C. There are _____ quarters in a dollar. D. A quarter is ( $\frac{1}{2}$ , $\frac{1}{4}$ , $\frac{1}{100}$ ) of a dollar. E. How many quarters can you get for a five-dollar bill? _____				
<b>10</b> Rulers	A is at _____. B is at _____. C is at _____. D is at _____. Put E at $4\frac{5}{8}$ . 				

*Tues.  
At your  
Seat*

Name: \_\_\_\_\_

Date: \_\_\_\_\_

Converting Unit Ratios 1

Classwork

Write the conversion factor that you would multiply to the left unit to convert to the unit on the right.

221. 10 miles → feet

222. 2000 yards → miles

223. 12 inches → feet

224. 2 days → hours

225. 45 minutes → seconds

226. 20 lbs → ounces

227. 3 hours → minutes

228. 20 seconds → minutes

229.  $\frac{20 \text{ miles}}{1 \text{ min}} = \frac{x \text{ miles}}{1 \text{ hour}}$

230.  $\frac{212 \text{ feet}}{1 \text{ year}} = \frac{x \text{ inches}}{1 \text{ month}}$

231.  $\frac{\$90.00}{1 \text{ day}} = \frac{x \text{ dollars}}{1 \text{ week}}$

232.  $\frac{20 \text{ sec}}{100 \text{ miles}} = \frac{1 \text{ min}}{x \text{ miles}}$

233.  $\frac{10 \text{ feet}}{3 \text{ hours}} = \frac{x \text{ inches}}{\text{hour}}$

234.  $\frac{10 \text{ yards}}{\text{hour}} = \frac{x \text{ feet}}{\text{hour}}$

235.  $\frac{\$16.00}{1 \text{ lb}} = \frac{x \text{ dollars}}{\text{ounce}}$

Homework

Write the conversion factor that you would multiply to the left unit to convert to the unit on the right.

236. 15 feet → miles

237. 1.5 feet → inches

238. 240 seconds → minutes

239. 7 days → hours

# What Did Snidely Say After Filling His Car With Super Premium, TopTest, Power Plus Gasoline?



Solve each problem and find your answer in the rectangle below. Cross out the box that contains your answer. When you finish, write the letters from the remaining boxes in the spaces at the bottom of the page.

- ① The Jelly Junior High school color is made by mixing red paint with yellow paint. The ratio of red to yellow is 3 to 5. How much red paint should be mixed with 20 oz of yellow?  
\_\_\_\_\_ oz
- ② The Lawn Order lawnmower factory can produce 12 lawnmowers in 8 hours. How many hours will it take the factory to produce 30 lawnmowers?  
\_\_\_\_\_ h
- ③ An object that weighs 10 lb on Earth would weigh only 4 lb on Mars. If you weigh 95 lb on Earth, how much would you weigh on Mars? \_\_\_\_\_ lb
- ④ The ratio of orange juice to pineapple juice in Tropical Treat punch is 4 to 3. Bill has 64 oz of orange juice. How much pineapple juice does he need?  
\_\_\_\_\_ oz
- ⑤ A cookie recipe for 60 cookies calls for 4 cups of flour. How much flour is needed to make 90 cookies?  
\_\_\_\_\_ cups
- ⑥ Jose can read 7 pages of his book in 5 minutes. At this rate, how long will it take him to read the entire 175-page book? \_\_\_\_\_ min
- ⑦ While exercising, Julie found that her heart was beating 12 times every 5 seconds. How many times was it beating per minute (60 seconds)? \_\_\_\_\_
- ⑧ If there are 1,200 calories in 8 oz of hot fudge, how many calories are in 3 oz of hot fudge? \_\_\_\_\_ cal
- ⑨ At a certain college, the ratio of men to women is 6 to 5. If there are 1,500 men, how many women are there? \_\_\_\_\_
- ⑩ One of the world's largest stained-glass windows is at Kennedy international Airport in New York. It is a rectangle with a height to length ratio of 2 to 25. If the window is 24 feet high, how long is it? \_\_\_\_\_ ft

HI	PU	TA	KE	EP	JU	NK	IN
450	48	1,210	300	12	125	340	20
GO	TO	HO	OD	NE	ED	GA	SS
136	1,250	6	15	40	144	38	7



240. 32 oz → pounds

241. 34 weeks → days

242. 36 months → year

243. 5 cups → ounces

244.  $\frac{\$20,000}{1 \text{ year}} = \frac{\$ \text{ dollars}}{1 \text{ month}}$

245.  $\frac{\$3.00}{1 \text{ lb}} = \frac{\$ \text{ dollars}}{1 \text{ ounce}}$

246.  $\frac{50 \text{ miles}}{1 \text{ hour}} = \frac{x \text{ miles}}{\text{minute}}$

247.  $\frac{30 \text{ seconds}}{30 \text{ miles}} = \frac{1 \text{ min}}{x \text{ miles}}$

248.  $\frac{50 \text{ feet}}{2 \text{ hours}} = \frac{x \text{ inches}}{1 \text{ hour}}$

249.  $\frac{1 \text{ day}}{\$100} = \frac{1 \text{ month}}{\$ \text{ dollars}}$

250.  $\frac{4 \text{ feet}}{1 \text{ second}} = \frac{x \text{ feet}}{1 \text{ hour}}$

*Wed  
Super  
Puzzle*

### Converting Unit Ratios 2

#### Classwork

Find the equivalent rate.

251.  $\frac{10 \text{ inches}}{1 \text{ year}} = \frac{x \text{ inches}}{1 \text{ month}}$

252.  $\frac{\$80}{2 \text{ hours}} = \frac{x \text{ dollars}}{1 \text{ minute}}$

253.  $\frac{10 \text{ feet}}{5 \text{ seconds}} = \frac{x \text{ feet}}{1 \text{ minute}}$

254.  $\frac{10 \text{ people}}{1 \text{ hour}} = \frac{x \text{ people}}{1 \text{ day}}$

255.  $\frac{\$10.00}{1 \text{ hour}} = \frac{x \text{ dollars}}{1 \text{ minute}}$

256.  $\frac{3 \text{ km}}{1 \text{ hour}} = \frac{x \text{ km}}{1 \text{ day}}$

257.  $\frac{\$735}{1 \text{ week}} = \frac{x \text{ dollars}}{1 \text{ day}}$

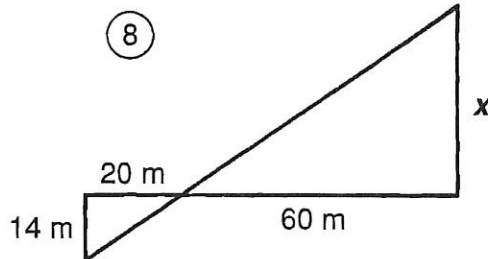
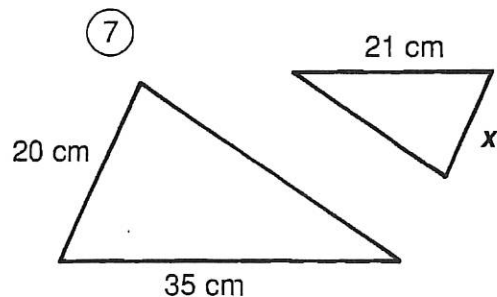
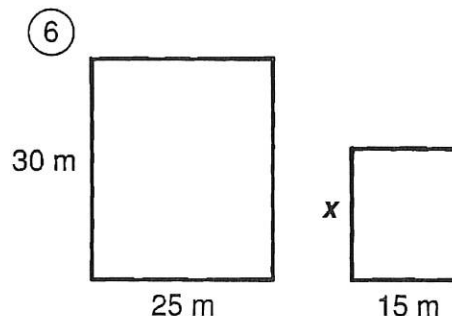
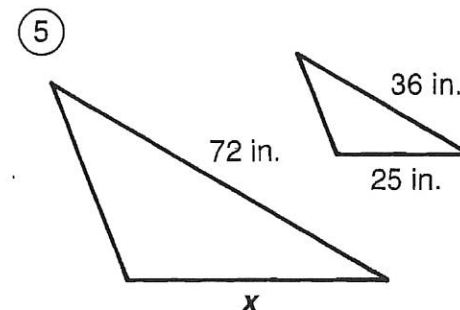
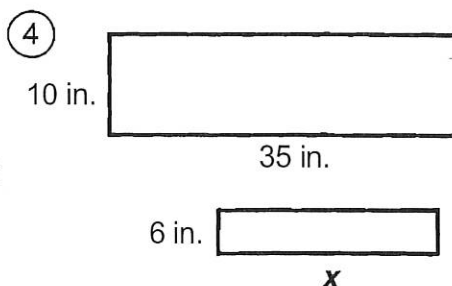
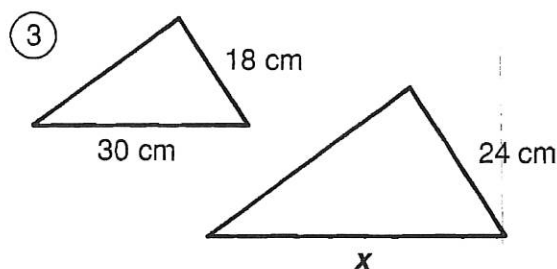
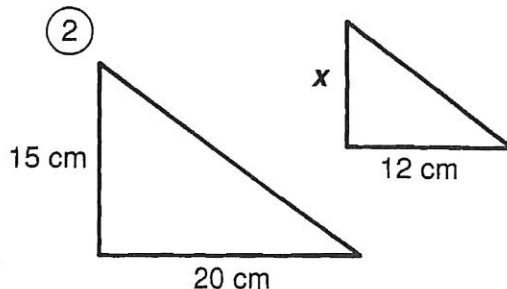
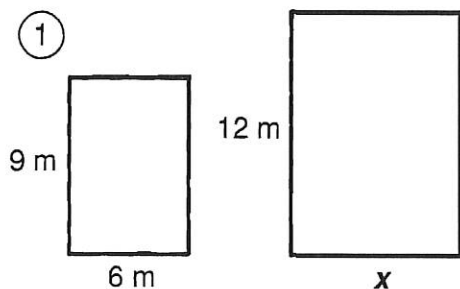
258.  $\frac{10 \text{ meters}}{1 \text{ sec}} = \frac{x \text{ meters}}{1 \text{ minute}}$

*Thurs.  
Super  
Puzzle*

# What Is a Termite's Favorite Breakfast?

For each pair of similar figures, find the length  $x$ . Cross out the letter next to your answer. When you finish, the answer to the title question will remain.

E	9 cm
L	14 cm
T	15 ft
A	20 m
G	50 in.
G	8 m
E	24 in.
S	12 cm
M	16 ft
K	46 m
D	21 in.
A	44 cm
C	10 cm
O	18 m
O	48 in.
F	40 cm
W	42 m

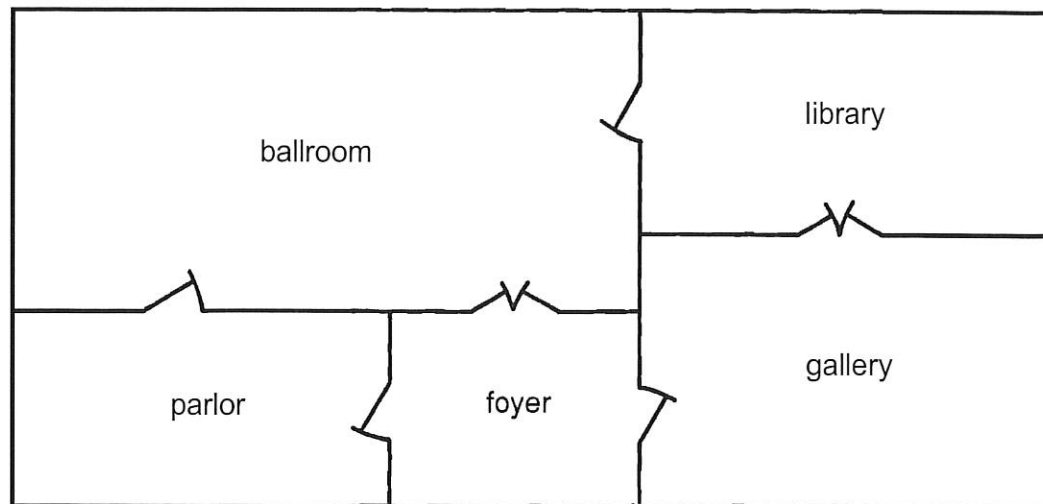


- ⑨ A flagpole casts a shadow 10 ft long. If a man 6 ft tall casts a shadow 4 ft long at the same time of day, how tall is the flagpole?

- ⑩ A photograph is 25 cm wide and 20 cm high. It must be reduced to fit a space that is 8 cm high. Find the width of the reduced photograph.

# What *Goes* Ha! Ha! Ha! Thud?

Scale → 2 cm : 3 m



This is a scale drawing of one floor in a European castle. Do each exercise and find your answer in the adjacent answer column. Write the letter of the answer in each box containing the number of the exercise.

- I. One dimension is given for each room. Measure to find the other dimension to the nearest tenth of a centimeter.

- ① ballroom 4.3 cm by \_\_\_\_\_  
 ② library 3.2 cm by \_\_\_\_\_  
 ③ parlor 2.8 cm by \_\_\_\_\_  
 ④ foyer 2.8 cm by \_\_\_\_\_  
 ⑤ gallery \_\_\_\_\_ by 6.0 cm

- Ⓢ 3.6 cm      Ⓝ 6.0 cm  
 Ⓚ 6.3 cm      Ⓥ 3.4 cm  
 Ⓢ 9.1 cm      Ⓞ 5.5 cm  
 ⓔ 3.9 cm      ⓑ 8.4 cm

- II. Find the actual room dimensions. ("Length" refers to the longer dimension and "width" to the shorter dimension.)

- ⑥ length of the ballroom      ⑦ width of the ballroom  
 ⑧ length of the library      ⑨ width of the library  
 ⑩ length of the parlor      ⑪ width of the parlor  
 ⑫ length of the foyer      ⑬ width of the gallery

- Ⓟ 8.65 m      ⓕ 4.2 m  
 Ⓜ 9 m      Ⓢ 13.65 m  
 ⓐ 5.4 m      Ⓛ 8.25 m  
 Ⓒ 13.25 m      Ⓣ 6.15 m  
 Ⓓ 6.45 m      Ⓡ 5.1 m  
 ⓗ 5.85 m      ⓖ 4.8 m

12	8	12	2	10	12	4	9	13	6	2	9	13	6	1	13	5	12	7	3	11	11
----	---	----	---	----	----	---	---	----	---	---	---	----	---	---	----	---	----	---	---	----	----

# Did You Hear About...

A	B	C	D	E	F
G	H	I	J	K	L
					?

Use a calculator to do each exercise. Find your answer and notice the word next to it. Write this word in the box containing the letter of the exercise.

I. Solve. Round each answer to the nearest tenth.

(A)  $\frac{7.5}{12} = \frac{4.2}{x}$

(B)  $\frac{15}{8} = \frac{80}{x}$

(C)  $\frac{6}{9.4} = \frac{x}{32}$

(D)  $\frac{7.9}{x} = \frac{1}{25}$

(E)  $\frac{12}{x} = \frac{3.14}{1}$

(F)  $\frac{x}{58} = \frac{37.5}{100}$

II. Solve. Round each answer to the nearest whole number.

- (G) Tom's red bicycle travels 50 ft for every 3 pedal turns. How many pedal turns are needed to travel a mile (5,280 ft)?
- (H) For a survey, a company decided to call 7 out of every 5,000 people. How many people should be called in a town of 78,000 people?
- (I) Gloria Trench checked her gas mileage and found that she had used 16.6 gal of gas to travel 372 mi. At this rate, how many gallons will she use to travel from San Francisco to Washington, D.C., a distance of 2,850 mi?
- (J) A U.S. nickel contains 3.9 g of copper and 1.2 g of nickel. How many kilograms of copper must be combined with 500 kg of nickel to make nickel coins?
- (K) On the stock exchange, 100 shares of Pizzazz Corp. stock are selling for \$425. How many shares can be purchased for \$1,000?
- (L) At Paul Bunyon's logging camp, the cook scrambled 20 eggs for every 3 loggers. How many eggs did he need for the 288 loggers at the camp?

24.7 PIECES

21.8 STORIES

1,840 FAINTED

197.5 DROPPED

19.6 THAT

1,625 CAN

6.7 THE

116 BOX

20.4 WHO

127 TRASH

1,355 PILE

317 INTO

235 AND

3.8 TEN

42.7 WRITER

109 A

324 FROM

1,920 LIVED

211.5 WROTE